



Bethel Foot and Ankle

203.743.7083

8 School Street
Bethel, CT 06801
www.BethelFootandAnkle.com

In this Issue...

- Step Into National Foot Health Awareness Month!
- Hitting the Trails with Happy Feet: 6 Tips for Outdoor Adventures
- Recipe of the Month: Strawberry Spinach Salad with Avocado & Walnuts

Step Into National Foot Health Awareness Month!



As winter recedes into our collective rearview and the seasons start to shift, National Foot Health Awareness Month begins in earnest! April marks the perfect time to shed those winter boots, get out into the open air, and show your feet some love.

[Click Here to Read More](#)

Hitting the Trails with Happy Feet: 6 Tips for Outdoor Adventures



Whether you're lacing up your boots for a challenging hike, taking a leisurely bike ride, or enjoying a refreshing swim at the beach, your feet are going to be an integral part of any outdoor activity.

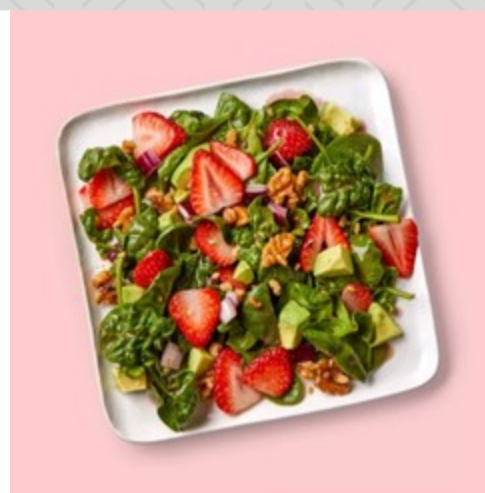
[Click Here to Read More](#)



Recipe of the Month

Strawberry Spinach Salad with Avocado & Walnuts

Serve this summery strawberry spinach salad alongside soup or a half sandwich. Top with grilled chicken or roasted salmon for a complete and easy, healthy meal.



Ingredients:

- 3 cups of baby spinach
- 1 tablespoon finely chopped red onion
- 1/2 cup of sliced strawberries
- 2 tablespoons vinaigrette, such as Annie's Light Raspberry Vinaigrette
- 1/4 medium avocado, diced
- 2 tablespoons of toasted walnut pieces

Directions:

1. Combine spinach, onion, and strawberries in a medium bowl.
2. Drizzle with vinaigrette; toss to coat.
3. Top with avocado and walnuts.

Recipe courtesy of www.eatingwell.com

Interesting Dates in April

April 1
April Fool's Day

April 2
Autism Awareness Day

April 7
Beer Day

April 7
World Health Day

April 10
Golfer's Day

April 11
Pet Day

April 12
Grilled Cheese Sandwich Day

April 15
National ASL Day

April 22
Earth Day

April 26
Pretzel Day

Trivia

What animal is most associated with the month of April?

- A. Cat
- B. Rabbit
- C. Mouse
- D. Chinchilla

Answer: B

The rabbit is often associated with the month of April. It symbolizes fertility and abundance, especially during springtime when nature is full of new life.

Joke

Why won't eggs play April Fool's pranks?

Answer: They might crack each other up.

Historical Facts for April

- On the night of April 14, 1912, four days into its journey from Southampton, England, to New York City, the Titanic collided with an iceberg off the coast of Newfoundland. In the early hours of April 15, 1912, the 882.5-foot-long ship broke apart and sank to the bottom of the ocean, taking with it the lives of more than 1,500 passengers and crew.
- For all the car enthusiasts out there, Ford unveiled its first Mustang on April 17, 1964, which cost \$2,368.
- The first battle of the Revolutionary War, Lexington and Concord, broke out on April 19, 1775
- The explosion of the Chernobyl nuclear plant in Ukraine occurred on April 26, 1986, which forced everyone within a 300-mile radius to be evacuated.
- Our first President, George Washington, was inaugurated on April 30, 1789, on the balcony of Federal Hall in New York City, New York. The inauguration was held nearly two months after the beginning of his four-year term as president.

Meet Our Doctors



Dr. Michael Z. Fein



Dr. Jamie A. Otfinoski

Our Office

Bethel Foot and Ankle
8 School Street
Bethel, CT 06801
203-743-7083
203-744-2811 fax

Mon: 8:00am – 5:00pm
Tues: 8:00am – 5:00pm
Wed: 9:00am – 6:00pm
Thurs: 9:00am – 5:00pm
Fri: 8:00am – 1:00pm

Need More info?

[CONTACT US](#) →



Bethel Foot and Ankle
Michael Fein DPM - Jamie Otfinoski DPM



Disclaimer: Content of this newsletter may not be used or reproduced without written permission of the author. This newsletter is not intended to replace the services of a doctor. No expressed or implied guarantees have been made or are made by the author or publisher. Information in this newsletter is for informational purposes only and is not a substitute for professional medical advice.